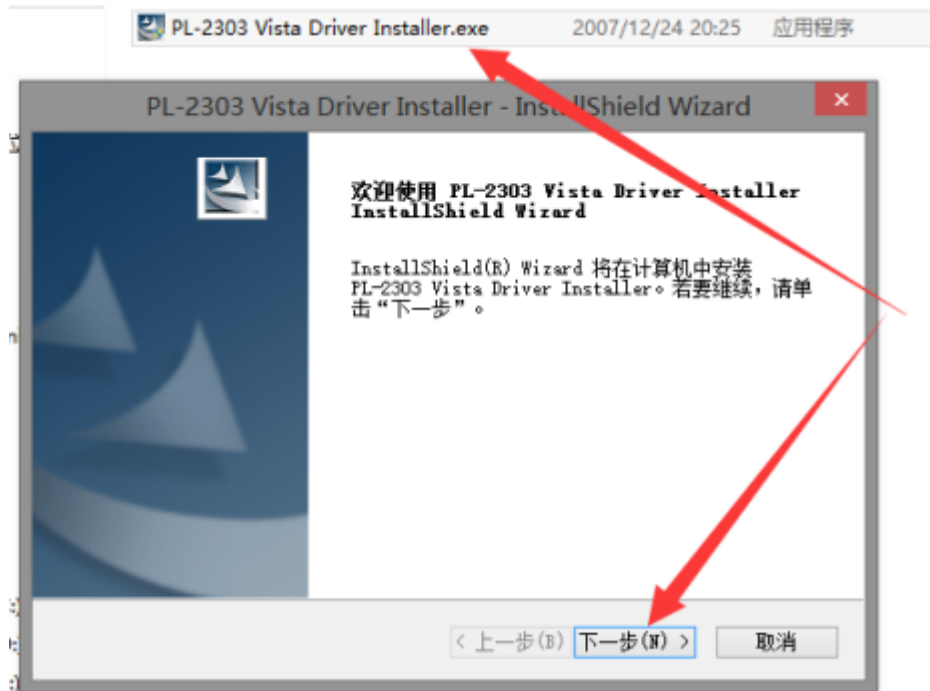
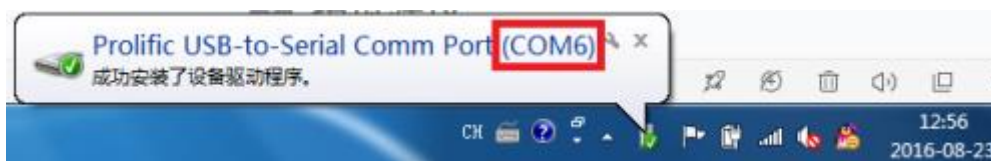


Software installation

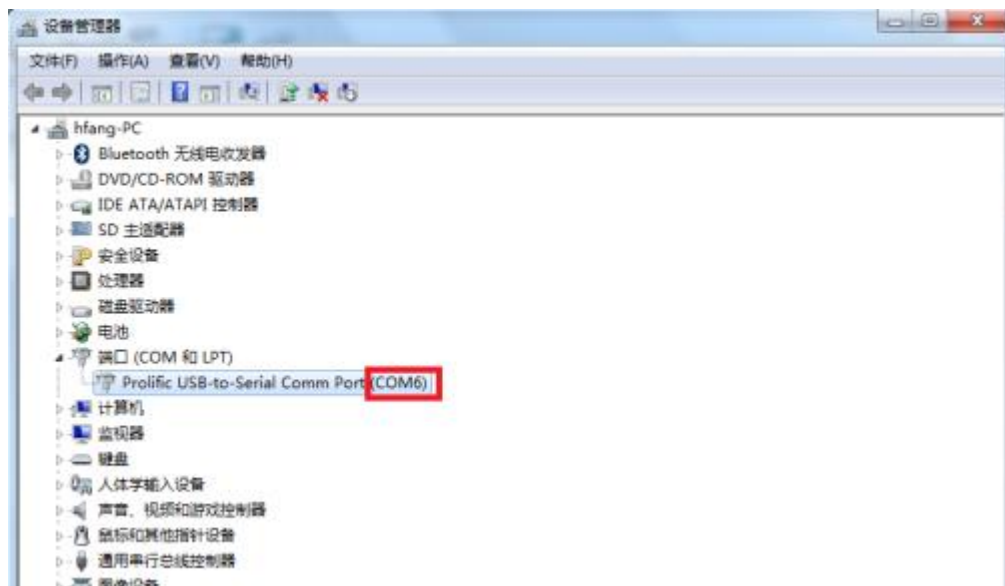
First: Find the PL2303 driver software , double-click to open the installation. If you have installed configuration software for other related products of our company, you can skip this step. Note: If the current account of the computer is not an administrator, be sure to right-click, select "Run as an administrator".



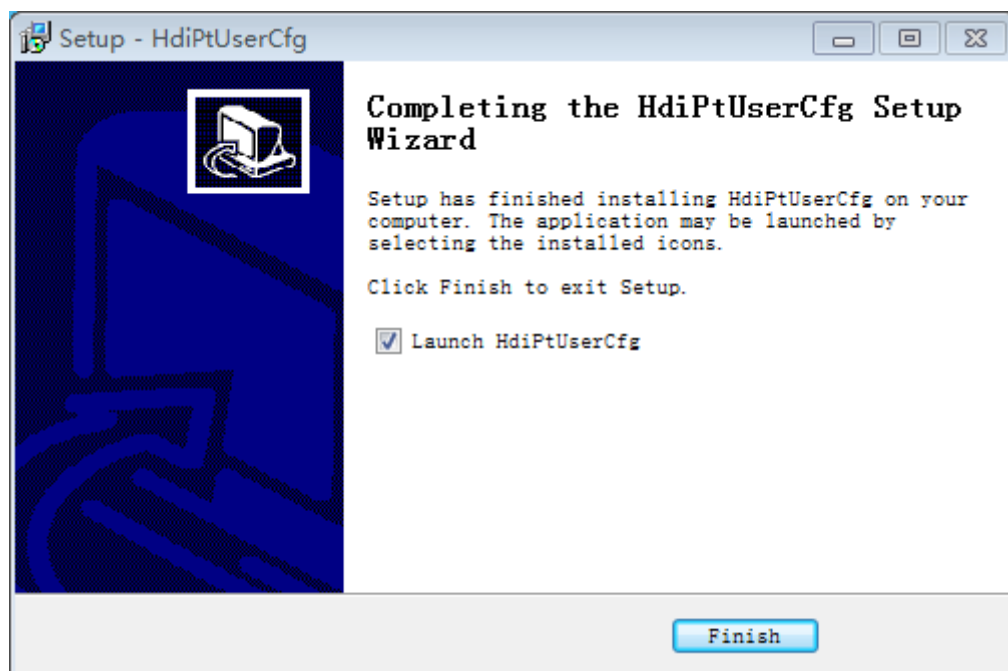
Second: After the driver is installed, the USB to Mini connection is inserted into the computer USB interface. The pop-up box in the lower right corner of the computer indicates that the installation is successful. You can check the COM password number.



You can also view the current COM number at the computer-property-device manager-port.

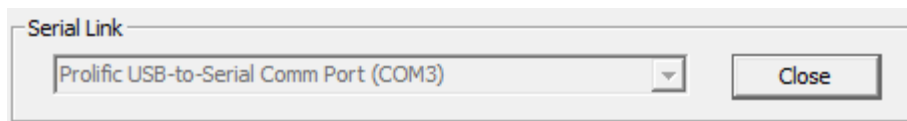


Third: Download the installation. Successful installation appears as shown in the following figure.

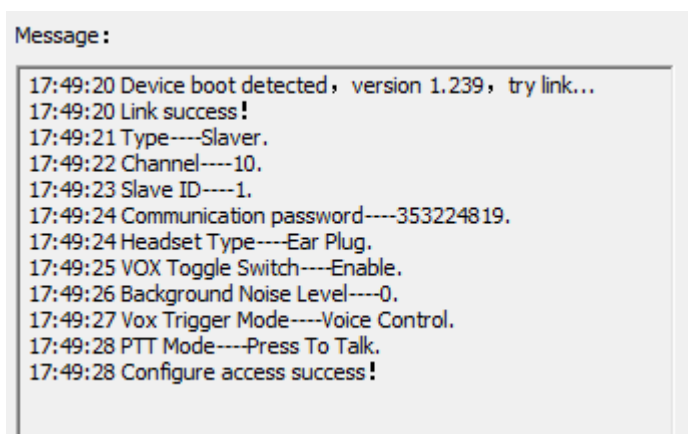


Fourthly: Operation

4.1 Turn off the machine and insert the data line. Then open the software and select the port to which your data line is connected. Click Open Port.



4.2 Turn on the machine, and you will see some configuration information printed out as shown in the figure in the lower part of the software. Then the startup will be successful.



4.3 After the boot is successful, you can configure it in the middle, and it will still be typed out in the information bar.

Type

Slave

Options

Channel

10 Any value between 2-36.

Slave ID

1 Any value between 1-12.

Communication Password

353224819 Any value between 0-999999999.

Headset Type

Ear Plug Head Phone

Background Noise Level

0----Relatively quiet occasions, voice is relatively small

Voice Control Options

Voice Control Continuous Talk

PTT Mode Options

Press To Talk Continuous Lock

Set

4.4 If the configuration options are not available, you can configure the file import directly. Click the import configuration button above to import the file.

Import Configuration File

Configuration File: G:\Work\Configuration.txt

Open Import

4.5 Click the Open button, select the specified file, and then click Import. Information on whether the configuration was successful will be printed.

Device boot detected, version 1.244, try link...
Link success!
Configuration success----write set 4 10
Configuration success----write set 4 10